

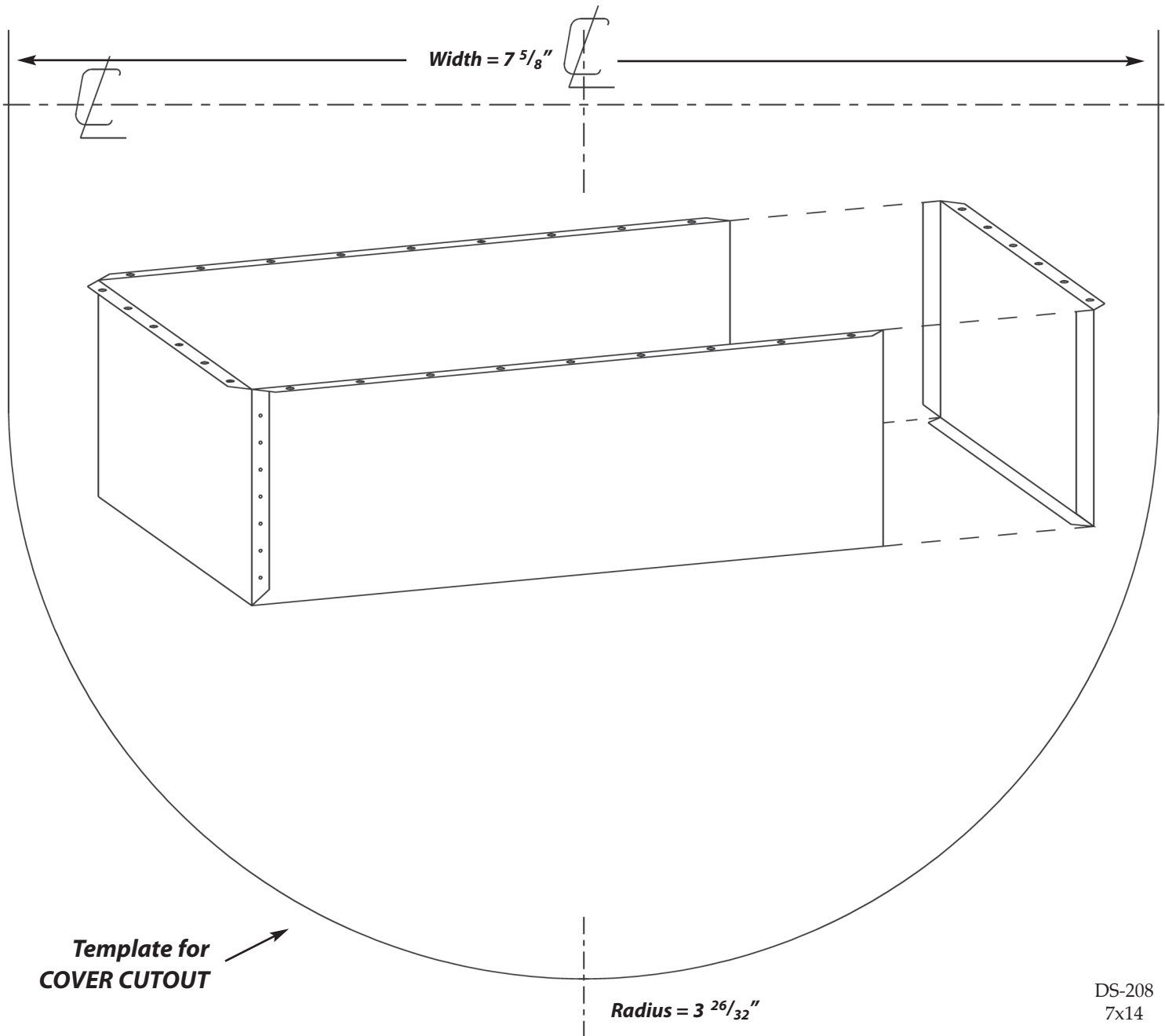


ATL Racing Fuel Cells Container Construction

for SAVER CELL® Bladders



1. Material: Cold rolled steel or aluminum type 5052. Minimum thickness = 20 Gauge Steel or 0.059" Aluminum. Consult your specific sanctioning body to confirm material requirements.
2. All interior surfaces must be smooth, and free from burrs and sharp edges.
3. End to be spot or bead welded to outside of body. If rivets are used, heads on inside of container must be taped over.
4. Paint or powdercoat inside and out with rust inhibiting, fuel resistant paint.
5. Punch holes in the cover first, then use the cover as a template to punch matching holes in the body.
6. Container is 3% larger than bladder to accept the fuel-swell factor.

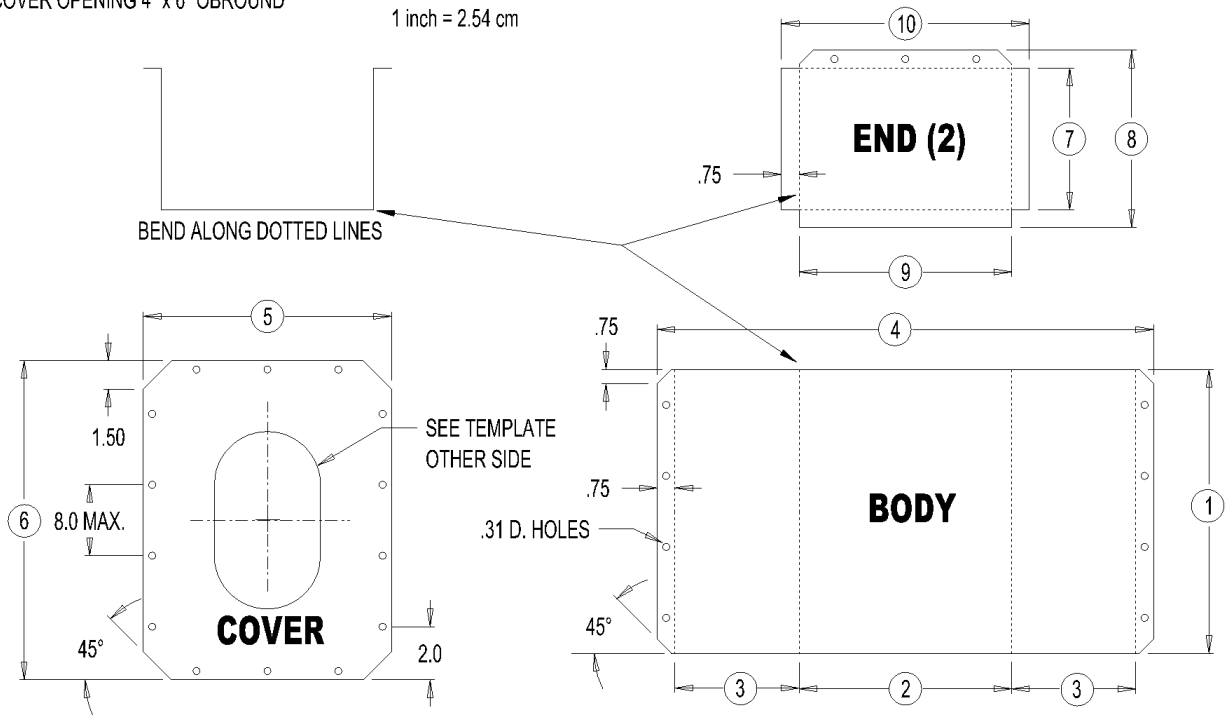


Template for
COVER CUTOUT

Radius = $3 \frac{26}{32}$ "

* COVER OPENING 4" x 6" OBOURND

ALL DIMENSIONS IN INCHES
1 inch = 2.54 cm



All dimensions given in inches

ATL BLADDER PART NUMBER		BODY DIMENSIONS				COVER DIMENSIONS		END DIMENSIONS			
		①	②	③	④	⑤	⑥	⑦	⑧	⑨	⑩
*SA105	*MB105	13.31	13.31	9.10	33.01	14.81	14.81	9.14	10.64	13.38	14.88
SA108	MB108	20.38	12.31	9.00	31.81	13.81	21.88	9.04	10.54	12.38	13.88
SA110	MB110	24.10	12.56	10.12	34.30	14.06	25.6	10.16	11.66	12.63	14.13
SA112	MB112	20.25	17.63	9.41	37.95	19.13	21.75	9.45	10.95	17.70	19.20
SA115	MB115	24.31	17.63	9.41	37.95	19.13	25.81	9.45	10.95	17.70	19.20
SA122A	MB122A	25.75	25.75	8.50	44.25	27.25	27.25	8.54	10.04	25.82	27.32
SA122B	MB122B	25.00	16.75	13.63	45.50	18.25	26.50	13.66	15.16	16.82	18.32
SA122C	MB122C	34.00	17.50	9.50	38.00	19.00	35.50	9.54	11.04	17.57	19.07
SA126A	MB126A	29.86	17.56	14.43	47.92	19.06	31.36	14.47	15.97	17.63	19.13
SA126B	MB126B	29.86	17.56	14.43	47.92	19.06	13.36	14.47	15.97	17.63	19.13
SA126C	MB126C	25.11	16.78	17.18	52.64	18.28	26.61	17.22	18.72	16.85	18.35
SA132A	MB132A	25.75	25.75	13.35	53.95	27.25	27.25	13.39	14.89	25.82	27.32
SA132B	MB132B	26.13	18.94	17.19	54.82	20.44	27.63	17.23	18.73	19.01	20.51
SA132C	MB132C	34.13	17.63	14.50	48.13	19.13	35.63	14.54	16.04	17.70	19.20
SA132D	MB132D	25.13	17.13	21.00	60.63	18.63	26.63	21.04	22.5	17.2	18.7
SA144	MB144	25.75	25.75	17.00	61.25	27.25	27.25	17.04	18.54	25.82	27.32

*Cover opening 4" x 6" Obround.

1 inch = 2.54 cm



1-800-526-5330 www.atlracing.com www.atlinc.com

ATL Racing Fuel Cells (USA) 45 Spear Road Corporate Park, Ramsey, NJ 07446-1251
USA T: 201-825-1400 F: 201-825-1962 email: atl@atlinc.com

ATL Racing Fuel Cells (UK) ATL Technology Centre, Denbigh Road, Bletchley, Milton Keynes
MK1 1DF UK T: (0)1908-351700 F: (0)1908-351750 email: atl@atlltd.com