

ATL® Fuel Scavenging Devices



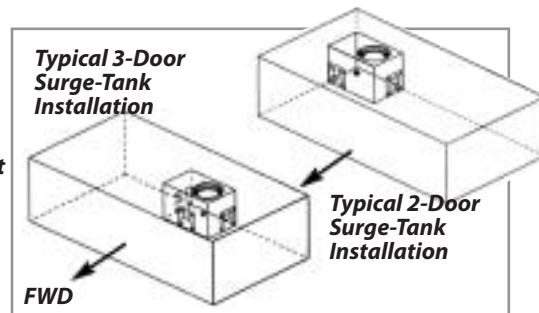
"Drop-In" Surge Tanks & Fuel Pick-Ups

ATL High Performance "Drop-In" Surge Tanks

Surge Tanks, also called "collectors", are small semi-flexible tanks installed inside the main fuel cell bladder. ATL's Surge Tanks maintain a reservoir of gasoline around the fuel pickup hose to prevent engine starvation during acceleration, cornering, braking or at low fuel levels. (For gasoline and diesel unless otherwise stated)

SURGE TANK FEATURES:

- Uses Exclusive ATL Trap Doors
- Scavenges Down to the Last Drop
- Works w/Internal or External Fuel Pump
- Eliminates Fuel Starvation & Air Entrapment
- Light & Thin for Minimal Fuel Displacement
- Flexible on Impact; Won't Cut Bladder
- Custom Sizes Available
- Easily Installed into Fuel Cell Foam
- Prevents Fuel Pump Cavitation



ST520 3-DOOR SURGE TANK .8 Gal
8" x 5" x 5" for Road Course Applications "ScavenJet I"™
#10 AN Standard
Optional: #6AN, #8AN



ST524 2-DOOR SURGE TANK .8 Gal
8" x 5" x 5" for Circle Track Applications "ScavenJet I"™
#10 AN Standard
Optional: #6AN, #8AN



ST533 2-PUMP SURGE TANK
10" x 5" x 5" Accepts (2) CFD-104 100 psi EFI pumps (Not Included). 3-Doors. Other sizes & configurations available.



ST528 3-DOOR MOLDED SURGE TANK
5" x 5" x 6" .6 Gal for Road Race, Off-Road & Rally Applications. #8 AN (Optional #6) "ScavenJet I"™



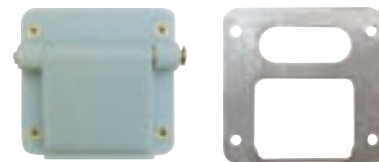
Suitable for ALL FUELS

ST508 MOLDED, NO-DOOR SURGE TANK
with foam 5" x 5" x 6" .6 Gal. Requires 1 Fill Pump & 1 Scavenge Pump, Internal or External



Suitable for ALL FUELS

KS145 TRAP DOOR & MOUNTING HARDWARE KIT
Composite Door with Stainless Steel Back Plate and Screws. Gas & Alky Compatible



ITC300 3-DOOR SURGE TANK with VEINS
5" x 7" x 5" .6 Gal, #8 AN (Optional #6) "ScavenJet I"™



ITC305 External Fuel Swirl Pot
1.5 Liter (1) #8 Outlet, (2) #6 Inlets, (1) #6 Return, (1) #6 Bleed



"ScavenJet"™ FUEL PICK-UPS
Factory-Sealed To Floor of Bladder or Surge Tank. AN #6, #8, #10

FUEL FILTERS
For Gas and/or Alky

TF268
Fits #6 Fuel Pick-Up

TF269
Fits #8 Fuel Pick-Up

TF270
Fits #10 Fuel Pick-Up



DUCK FOOT™ FUEL TRAP WITH FILTER (Shown right)

TF239 #6 AN (3/8") P/U

TF240 #8 AN (1/2") P/U

TF442 #10 AN (5/8") P/U
Overall Length is 22"



TF520 "FUEL VAC"™
Multi-Point Fuel Pick-Up 5/16" (8mm)
See Bulletin DS-516

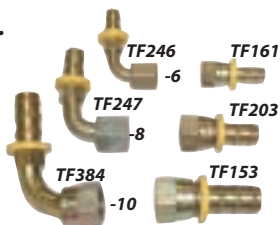


TF479 "ScavenJet I"™



TF667 "ScavenJet II"™
Corner Fit

AN-6, -8, -10 PUSH-LOCK HOSE END FITTINGS
Standard Steel Fittings. Aluminum Fittings Also Available.



FUEL HOSE
Sold per foot

TF159 #6 AN FUEL HOSE, 3/8" ID

TF197 #8 AN FUEL HOSE, 1/2" ID

TF212 #10 AN FUEL HOSE, 5/8" ID



Suitable for ALL FUELS

Hose ready for use with "ScavenJet"™

Has one straight and one 90° end

TF239-S #6 AN (3/8") P/U

TF240-S #8 AN (1/2") P/U

TF442-S #10 AN (5/8") P/U
Overall Length is 22"

Overall Length is 22"

TF626

#10 "Rigid-Flex" Alky-Tube Pick-Up 19.5" (Fits SP126-LM)
Custom Length by Special Order

