

ATL

ATL "Flex-Tank"™

SPECIFICATIONS

COLLAPSIBLE FABRIC STORAGE BLADDERS

**PILLOW STYLE
FLEX-TANKS**

SERVING:

- Defense
- Industry
- Environment
- Exploration
- Energy
- Agriculture
- Utilities
- Homeland Security
- Relief Organizations



**Toll Free In North America:
1-800-526-5330**



PETRO-FLEX®



AQUA-FLEX®



CHEM-FLEX®



CARGO-FLEX™

www.pillowtanks.com

Aero Tec Laboratories Inc. USA • Aero Tec Laboratories Ltd. UK

ATL

DS 483
5/05

LEVEL 3

HEAVY-DUTY MILITARY/INDUSTRIAL STYLE FLEX-TANKS *see DS-544*

* Always consult with an ATL Sales Engineer to confirm chemical compatibility.

	NOMINAL CAPACITY		FULL DIMENSIONS (L x W x H) NOMINAL MAXIMUMS		PETRO-FLEX® TYPE-P Gasoline, Oil, Diesel, Jet Fuel, Dielectrics MTL: Mil-T-52983	AQUA-FLEX® TYPE-W Drinking Water FDA, NSF 61 MTL: Mil-T-53029	CHEM-FLEX® TYPE-C *Most Chemicals & Process Water	SHIPPING			
	U.S. GAL.	1000L M ³	FT	M				Wt. Lbs. Approx.	Wt. Kg. Approx.	Cube Ft ³ Approx.	Cube M ³ Approx.
UTILITY	25	0.1	3.5' x 2.5' x 0.50'	1.1m x .8m x .15m	#105707	#156707	#160707	25	11	4	.1
	50	0.2	4.2' x 3.3' x 0.75'	1.3m x 1.0m x 0.2m	105712	156712	160712	30	14	6	.2
	100	0.4	5.3' x 4.2' x 1.00'	1.6m x 1.3m x 0.3m	105714	156714	160714	35	16	6	.2
	150	0.6	6.6' x 4.2' x 1.25'	2.0m x 1.3m x 0.4m	105715	156715	160715	40	18	10	.3
	200	0.8	7.9' x 4.9' x 1.25'	2.4m x 1.5m x 0.4m	105716	156716	160716	45	20	10	.3
	250	1.0	8.7' x 4.9' x 1.5'	2.7m x 1.5m x 0.5m	105717 (P)	156717 (P)	160717	50	23	10	.3
	300	1.2	10.0' x 4.9' x 1.5'	3.0m x 1.5m x 0.5m	105718	156718	160718	55	25	10	.3
	500	2.0	9.3' x 7.5' x 1.75'	2.8m x 2.3m x 0.5m	105722	156722	160722	60	27	10	.3
750	3.0	11.5' x 7.5' x 1.75'	3.4m x 2.4m x 0.5m	105725	156725	160725	75	34	10	.3	
INTERMEDIATE	1,000	4	11.6' x 9.8' x 2.0'	3.5m x 3.0m x 0.6m	105730	156730	160730	90	41	10	.3
	1,500	6	12.8' x 11.0' x 2.5'	3.9m x 3.4m x 0.7m	105731 (P)	156731	160731	115	52	10	.3
	2,000	8	14.2' x 12.3' x 2.75'	4.3m x 3.7m x 0.8m	105732	156732	160732	145	66	20	.6
	2,500	10	14.8' x 13.25' x 3.0'	4.5m x 4.0m x 0.9m	105733	156733	160733	150	68	20	.6
	3,000	12	15.3' x 14.8' x 3.25'	4.7m x 4.5m x 1.0m	105735	156735	160735	165	75	20	.6
	4,000	16	17.4' x 15.5' x 3.5'	5.3m x 4.7m x 1.1m	105737	156737	160737	185	84	20	.6
	5,000	20	18.7' x 17.2' x 3.75'	5.7m x 5.2m x 1.1m	105739	156739	160739	205	93	20	.6
	6,000	24	18.8' x 17.7' x 4.0'	5.7m x 5.4m x 1.2m	105740	156740	160740	245	111	20	.6
	7,500	30	19.8' x 19.3' x 4.25'	6.0m x 5.9m x 1.3m	105743	156743	160743	295	134	20	.6
	10,000	40	22.1' x 21.0' x 4.5'	6.7m x 6.4m x 1.4m	105745	156745	160745	375	170	44	1.3
	15,000	60	24.7' x 24.6' x 4.75'	7.5m x 7.5m x 1.4m	105755	156755	160755	490	223	44	1.3
BULK	20,000	80	30.8' x 24.6' x 5.0'	9.4m x 7.5m x 1.5m	105770	156770	160770	530	241	44	1.3
	25,000	100	37.0' x 24.6' x 5.25'	11.3m x 7.5m x 1.6m	105775 (P)	156775	160775	745	339	44	1.3
	40,000	160	56.6' x 24.6' x 5.5'	17.3m x 7.5m x 1.7m	105781	156781	160781	1200	545	90	3
	50,000	200	66.9' x 24.6' x 5.5'	20.4m x 7.5m x 1.7m	105785	156785	160785	1500	682	90	3
	100,000	400	86.4' x 35.3' x 6.0'	26.3m x 10.8m x 1.8m	105789	156789	160789	2250	1023	120	3.5

(P) Indicates "-S" Version is National Stock Number (NSN) Flex-Tank. Please Contact an ATL Sales Engineer for Details.

LEVEL 2

LIGHT-DUTY COMMERCIAL STYLE FLEX-TANKS *see DS-544*

* Always consult with an ATL Sales Engineer to confirm chemical compatibility.

	NOMINAL CAPACITY		FULL DIMENSIONS (L x W x H) NOMINAL MAXIMUMS		PETRO-FLEX® TYPE-Y Diesel Jet Fuel, Oil	AQUA-FLEX® TYPE-V Water FDA, Not NSF	CHEM-FLEX® TYPE-R *Most Chemicals Brines, Effluents	SHIPPING			
	U.S. GAL.	1000L M ³	FT	M				Wt. Lbs. Approx.	Wt. Kg Approx.	Cube Ft ³ Approx.	Cube M ³ Approx.
UTILITY	25	0.1	3.5' x 2.5' x 0.50'	1.1m x .8m x .15m	#116707	#125707	#110707	25	11	4	.1
	50	0.2	4.2' x 3.3' x 0.75'	1.3m x 1.0m x 0.2m	116712	125712	110712	30	14	6	.2
	100	0.4	5.3' x 4.2' x 1.00'	1.6m x 1.3m x 0.3m	116714	125714	110714	35	16	6	.2
	150	0.6	6.6' x 4.2' x 1.25'	2.0m x 1.3m x 0.4m	116715	125715	110715	40	18	10	.3
	200	0.8	7.9' x 4.9' x 1.25'	2.4m x 1.5m x 0.4m	116716	125716	110716	45	20	10	.3
	250	1.0	8.7' x 4.9' x 1.5'	2.7m x 1.5m x 0.5m	116717	125717	110717	50	23	10	.3
	300	1.2	10.0' x 4.9' x 1.5'	3.0m x 1.5m x 0.5m	116718	125718	110718	55	25	10	.3
	500	2.0	9.3' x 7.5' x 1.75'	2.8m x 2.3m x 0.5m	116722	125722 (P)	110722	60	27	10	.3
	750	3.0	11.5' x 7.5' x 1.75'	3.4m x 2.4m x 0.5m	116725	125725	110725	75	34	10	.23
INTERMEDIATE	1,000	4	11.6' x 9.8' x 2.0'	3.5m x 3.0m x 0.6m	N.A.	125730	110730	90	41	10	.3
	1,500	6	12.8' x 11.0' x 2.5'	3.9m x 3.4m x 0.7m	N.A.	125731	110731	115	52	10	.3
	2,000	8	14.2' x 12.3' x 2.75'	4.3m x 3.7m x 0.8m	N.A.	125732	110732	145	66	20	.6
	2,500	10	14.8' x 13.25' x 3.0'	4.5m x 4.0m x 0.9m	N.A.	125733	110733	150	68	20	.6
	3,000	12	15.3' x 14.8' x 3.25'	4.7m x 4.5m x 1.0m	N.A.	125735	110735	165	75	20	.6
	4,000	16	17.4' x 15.5' x 3.5'	5.3m x 4.7m x 1.1m	N.A.	125737	110737	185	84	20	.6
	5,000	20	18.7' x 17.2' x 3.75'	5.7m x 5.2m x 1.1m	N.A.	125739 (P)	110739	205	93	20	.6
	6,000	24	18.8' x 17.7' x 4.0'	5.7m x 5.4m x 1.2m	N.A.	125740	N.A.	245	111	20	.6
	7,500	30	19.8' x 19.3' x 4.25'	6.0m x 5.9m x 1.3m	N.A.	125743	N.A.	295	134	20	.6
	10,000	40	22.1' x 21.0' x 4.5'	6.7m x 6.4m x 1.4m	N.A.	125745	N.A.	375	170	44	1.3
	15,000	60	24.7' x 24.6' x 4.75'	7.5m x 7.5m x 1.4m	N.A.	125755	N.A.	490	223	44	1.3
BULK	20,000	80	30.8' x 24.6' x 5.0'	9.4m x 7.5m x 1.5m	N.A.	125770	N.A.	530	241	44	1.3
	25,000	100	37.0' x 24.6' x 5.25'	11.3m x 7.5m x 1.6m	N.A.	125775	N.A.	745	339	44	1.3
	40,000	160	56.6' x 24.6' x 5.5'	17.3m x 7.5m x 1.7m	N.A.	125781	N.A.	1200	545	90	3
	50,000	200	66.9' x 24.6' x 5.5'	20.4m x 7.5m x 1.7m	N.A.	125785	N.A.	1500	682	90	3

(P) Indicates "-S" Version is National Stock Number (NSN) Flex-Tank. Please Contact an ATL Sales Engineer for Details.

LEVEL 1

EXPENDABLE LOW COST AQUA-FLEX® WATER TANKS see DS-460

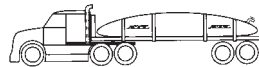
Nominal Capacity		Full Dimensions, Nominal Max.		AQUA-FLEX® TYPE-G	Potable Water, Waste Water, Pool Water, Emergency Water			SHIPPING			
U.S. Gal.	1000L/M ³	FT	M		Fill/Discharge FNPT	Vent FNPT	"Full" Signal	Wt. Lbs. Approx.	Wt. Kg Approx.	Cube Ft ³ Approx.	Cube M ³ Approx.
200	0.8	7' x 5' x 1'	2.1m x 1.5m x .3m	#109716	(1) 1" (25mm)	1" (25mm)	N	11	5	6	.2
250	1.0	7' x 6' x 1'	2.1m x 1.8m x .3m	109717	(1) 1" (25mm)	1" (25mm)	N	13	6	6	.2
500	2.0	11' x 6' x 1'	3.3m x 1.8m x .3m	109722	(1) 1" (25mm)	1" (25mm)	N	24	11	10	.3
1,000	4.0	11' x 9' x 1.5'	3.3m x 2.7m x .4m	109730	(1) 1" (25mm)	1" (25mm)	N	36	16	10	.3
2,000	8.0	11' x 11' x 1.8'	3.3m x 3.3m x .6m	109732	(1) 2" (50mm)	1" (25mm)	Y	54	25	10	.3
4,000	16	22' x 11' x 1.8'	6.7m x 3.3m x .6m	109737	(1) 2" (50mm)	1" (25mm)	Y	80	36	10	.3
8,000	32	22' x 22' x 1.8'	6.7m x 6.7m x .6m	109744	(1) 2" (50mm)	1" (25mm)	Y	124	56	10	.3
12,000	48	33' x 22' x 1.8'	10m x 6.7m x .6m	109750	(2) 2" (50mm)	1" (25mm)	Y	210	95	10	.3

LEVEL 3

PETRO-FLEX® RANGE EXTENSION BLADDER TANKS (GASOLINE OR DIESEL) see DS-539

Nominal Capacity		Full Dimensions, Nominal Max.		PETRO-FLEX® RANGE EXT.	Fuel Bladders for Gasoline and Diesel Fuels			SHIPPING			
U.S. Gal.	1000L/M ³	FT	M		Fill FNPT	Vented Safety Cap	Outlet Discharge	Wt. Lbs. Approx.	Wt. Kg Approx.	Cube Ft ³ Approx.	Cube M ³ Approx.
25	.1	2.5' x 3.0' x 0.50'	0.8 m x 0.9m x .15m	#105405	2" (50mm)	Y	1/2" (13mm)	25	11	4	.1
50	.2	4.6' x 3.0' x 0.75'	1.4 m x 0.9m x 0.2m	105410	2" (50mm)	Y	1/2" (13mm)	30	14	6	.2
75	.3	4.6' x 3.8' x 1.00'	1.4 m x 1.2m x 0.3m	105413	2" (50mm)	Y	1/2" (13mm)	34	15	6	.2
100	.4	4.6' x 4.5' x 1.00'	1.4 m x 1.3m x 0.3m	105415	2" (50mm)	Y	1/2" (13mm)	35	16	6	.2
150	.6	4.6' x 6.0' x 1.25'	1.4 m x 1.8m x 0.4m	105420	2" (50mm)	Y	1/2" (13mm)	40	18	10	.3
200	.8	5.0' x 6.8' x 1.25'	1.5 m x 2.0m x 0.4m	105425	2" (50mm)	Y	1/2" (13mm)	45	20	10	.3
300	1.2	7.5' x 7.0' x 1.5'	2.3 m x 1.8m x 0.5m	105430	2" (50mm)	Y	1/2" (13mm)	55	25	10	.3

LEVEL 3



HEAVY DUTY CARGO-FLEX™ TRANSPORT TANKS see DS-544

*FOR USE WITH D.O.T. WAIVER ONLY - Consult an ATL Sales Engineer

Nominal Capacity	U.S. GAL	1000L/M ³	Fill Pressure (psi)	EMPTY DIMENSIONS NOMINAL MAX.		Underliner	Number of Ratchet Tie-Downs Included	Fill/Discharge 1" = 25mm	CARGO-FLEX™	CARGO-FLEX™	CARGO-FLEX™	SHIPPING			
				FT	M				TYPE-P2 *Gasoline, Diesel Jet Fuel, Oil	TYPE-W2 Drinking Water FDA, NSF 61	TYPE-C2 *Chemicals Brines, Effluents	Wt. Lbs. Approx.	Wt. Kg Approx.	Cube Ft ³ Approx.	Cube M ³ Approx.
1,000	3.8	3	10' x 7.4'	3.0m x 2.25m	Y	2	2"	#105830	#156830	#160830	100	45	14	.4	
1,200	4.6	3	12' x 7.4'	3.7m x 2.25m	Y	2	2"	105833	156833	160833	125	57	14	.4	
1,500	5.8	3	15' x 7.4'	4.6m x 2.25m	Y	4	2"	105837	156837	160837	150	68	14	.4	
2,000	7.7	3	20' x 7.4'	6.1m x 2.25m	Y	4	2"	105841	156841	160841	175	80	20	.6	
3,000	11.5	3	30' x 7.4'	9.2m x 2.25m	Y	4	4"	105850	156850	160850	200	91	20	.6	
4,000	15.4	3	40' x 7.4'	12.3m x 2.25m	Y	4	4"	105856	156856	160856	220	100	20	.6	
4,600	17.7	3	45' x 7.4'	13.7m x 2.25m	Y	4	4"	105862	156862	160862	240	109	20	.6	
5,000	19.3	3	48' x 7.4'	14.6m x 2.25m	Y	6	4"	105870	156870	160870	260	118	20	.6	
6,000	24.2	3	55' x 7.4'	15.6m x 2.25m	Y	6	4"	105884	156884	160884	300	136	20	.6	

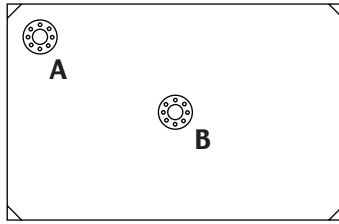
Stakebodies & Flatbeds



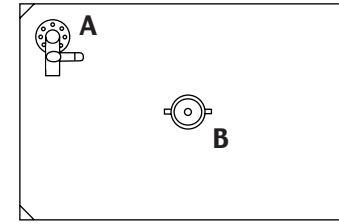
"Flex-Tank"™ Configurations

UTILITY TANKS

25 TO 750 GAL.
(95 to 2,900 L)



A: 2" FNPT (50mm) Fill/Discharge.
B: 2" FNPT (50mm) Vent/Relief
with Stand Pipe or Plug.



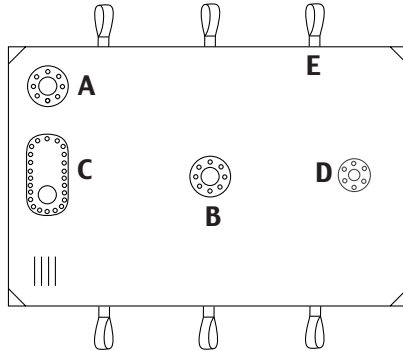
PETRO-FLEX RANGE EXTENSION BLADDERS

25 TO 300 GAL.
(100 to 1,200 L)

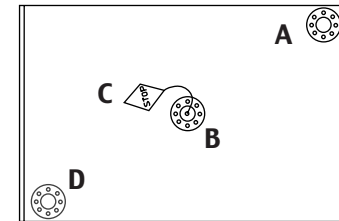
A: 1" (25mm) Outlet
Reduced to 1/2"
Ball Valve
B: 2" Dia. (50mm) Stand
Pipe & Safety Cap/Vent

INTERMEDIATE TANKS STATIC STORAGE

1,000 TO 15,000 GAL.
(3,800 TO 57,000 L)



A: 2" FNPT (50mm) Final Drain
with Plug
B: 2" FNPT (50mm) Vent/Relief
with Stand Pipe
C: 2" FNPT (50mm) Fill/Discharge
on a 6"x10" (150mm x 250mm)
Access Flange
D: Optional Bottom Drain
(Specify Location)
E: Loop Handles



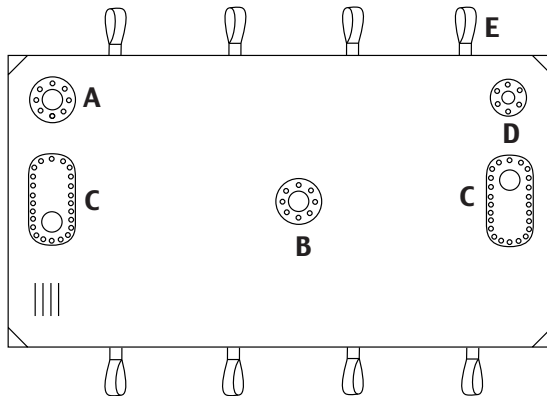
AQUA-FLEX TYPE-G

200 TO 12,000 GAL.

(800 to 48,000 L)
A: 1" FNPT (25mm) Fill/
Discharge to 1,000 Gal.
A: 2" FNPT (50mm)
2,000 Gal. and Up
B: 1" FNPT (25mm)
Vent/Relief
C: "FULL" Placard
D: 2" FNPT (50mm) on
12,000 Gal. Only

BULK TANKS STATIC STORAGE

20,000 TO 100,000 GAL.
(76,000 TO 380,000 L)

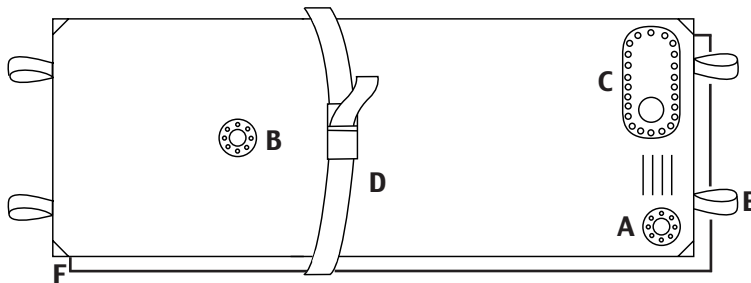


A: 2" NPT (50mm) Final Drain with Plug
B: 2" NPT (50mm) Vent/Relief with
Stand Pipe
C: 3" NPT (75mm) Fill/Discharge
(4" Optional) on a 6"x10"
(150mm x 250mm) Access Flange
D: Optional Bottom Drain
E: Loop Handles

TRANSPORT TANKS

1,000 TO 6,000 GAL.
(3,800 TO 23,000 L)

TIE-DOWNS &
UNDERLINER
INCLUDED



A: 2" NPT (50mm) Final Drain with Plug
B: 1" NPT (25mm) Air Bleed
C: 2" or 4" NPT (50mm or 100mm)
Fill/Discharge on a 6"x10"
(150mm x 250mm) Access Flange
Optional: Static Pressure Gauge or
Relief Valve
D: Ratchet Tie-Down Straps (2 to 6)
E: Loop Handles
F: Under-Liner Fabric



ATL "2 X 2"
FUEL DISPENSING PUMPS
DIESEL, GASOLINE, or ELECTRIC
NSN-4320-01-408-2436
See ATL DS-480



ATL "Flex-Tank"TM

A C C E S S O R I E S

CONTACT YOUR ATL SALES ENGINEER FOR:

- **Ground Cloths**
- **Bottom Drains**
- **Hoses and Couplings**
- **Valves and Fittings**
- **Tote Bags**
- **Ratchet Tie-Down Straps**
- **Sun-Shield Covers**
- **Fuel and Water Transfer Pumps**
- **Skidded Ship/Store Crates**
- **Flanges and Manways**
- **Berm Liners**
- **Flame Shields**
- **Totalizers**
- **Repair Plugs**
- **Repair Kits**

All ATL Flex-Tanks (except Type-G) are constructed of high-tenacity woven fabrics which are coated and impregnated with specialty synthetic rubber compounds. These tanks are manufactured with heat and pressure seams, heavy-duty flange connections and reinforcements at all corners and openings. They exhibit excellent resistance to sun light (UV), temperature extremes, abrasion, corrosion, ozone checking and long-term storage. For over 30 years, ATL Flex-Tanks have been in world wide service with the U.S. Army, Navy, Air Force, United Nations and thousands of independent businesses. When portability, reliability, durability and economy are essential, ATL Flex-Tanks are the only logical choice!



PILLOW STYLE
FLEX-TANKS

WORLD HEADQUARTERS
Aero Tec Laboratories Inc.
Spear Road Industrial Park
Ramsey, NJ 07446-1251 USA
Tel: 201-825-1400
Fax: 201-825-1962
e-mail: atl@atlinc.com
www.atlinc.com

Toll Free In North America:
1-800-526-5330
www.pillowtanks.com

EUROPEAN OPERATIONS
Aero Tec Laboratories Ltd.
One Patriot Drive, Rooksley Park
Milton Keynes MK13 8PU England
Tel: +44 (0) 1908-351700
Fax: +44 (0) 1908-351750
e-mail: atl@atlltd.com
www.atlinc.com

